

K9³⁰ LED

PORTABLE WORKLIGHT

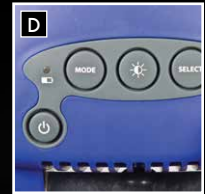


The K9 30 LED Gives

ULTIMATE POWER • CONTROL • PERFORMANCE

More than 5000lm output from the infinite varifocus head

1.8 meters (6 feet)



- A** High efficiency 30 LED ultra bright power LED head. Fully focusable 3-stage optics, full flood to full spot beam. Zero maintenance, 50,000 hour LED array.
- B** Full tension clamping handle prevents any movement of head release clamp to allow 360° movement.
- C** Variable section integrally stowed 6ft mast. Quick Loc connection allows instant setup.
- D** Waterproof membrane panel for head controls:
 - Battery status
 - Brightness
 - Mode selection
 - On / Off
- E** Heavy duty full retracting spiral extension cable - no need for additional extension cables.
- F** Ruggedised internal steel chassis gives massive strength and rigidity. Impact absorbing outer casing tested in all temperatures and environments. Comfort carry handle connects straight to internal chassis to distribute load.
- G** Integral tripod stabiliser legs give a sturdy stable base for mast at full extension.



LED20

Daylight bright 6500K light source concentrated into power beam for illumination of distant objects or filtered by holographic lens to flatten light into an extremely wide beam angle for close up work as required. Infinitely variable in-between.

Construction

The K9 30 LED uses impact absorbing long life polymers for outer body chassis in conjunction with a steel inner support chassis for full containment and protection of the unit.



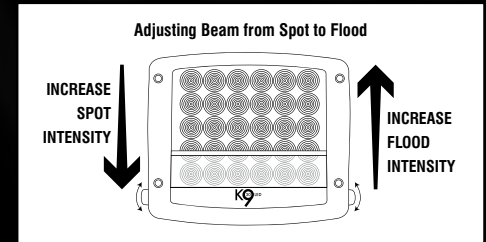
Thermal management system to maximise performance in all environments



Comfort grip for carrying connects to battery chassis for own load distribution



Solid clamping interlocking extension poles. Quick fit for additional height.



Performance

The K9 30 can be offered in a wide choice of configurations to suit the requirements of specific applications. Please contact us for more details.

The standard configuration offers the following performance:

Lumens Output (max) ≥ 5000

POWER SETTING	BATTERY TYPE	
	SEALED LEAD ACID	LITHIUM
	MAX RUN TIME (APPROX HOURS)	MAX RUN TIME (APPROX HOURS)
125%	6	7
100%	8	8.5
75%	11	10
50%	16	15
25%	33	29
8%	110	110

Recharge Times

AC mains standard charger: 9hrs

AC mains boost charger: 6hrs

DC 12/24V VEPAC charger: 6hrs

Weights & Dimensions

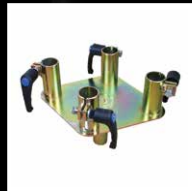
Weight: 11.8kg (sealed lead acid battery) 7.8kg (lithium)

Dimensions: L 390 x W 195 x H 255mm (stowed)

OPTIONAL EXTRAS



Integrated Vepac vehicle charging system. Full recharge from connection to a vehicle supply. K9 30 LED never needs to leave the vehicle. Intelligent supply sense prevents over discharge of vehicle source battery.



Four way adaptor to allow up to four K9 30 heads to be mounted onto a 3m tripod base. Heads can be independently adjusted to any direction. The tripod connects into the K9 30 to give additional stability. The tripod is rugged and non-conductive.



AMF - Mains failure detection system switches on all equipped K9 30 LED's in power outage. Simply plug into the supply that needs maintaining.



Remote control + mesh network module. Duplicates all functions of LED controls.



Patents Pending GB 0922370.2 - PCT/GB2010/001619